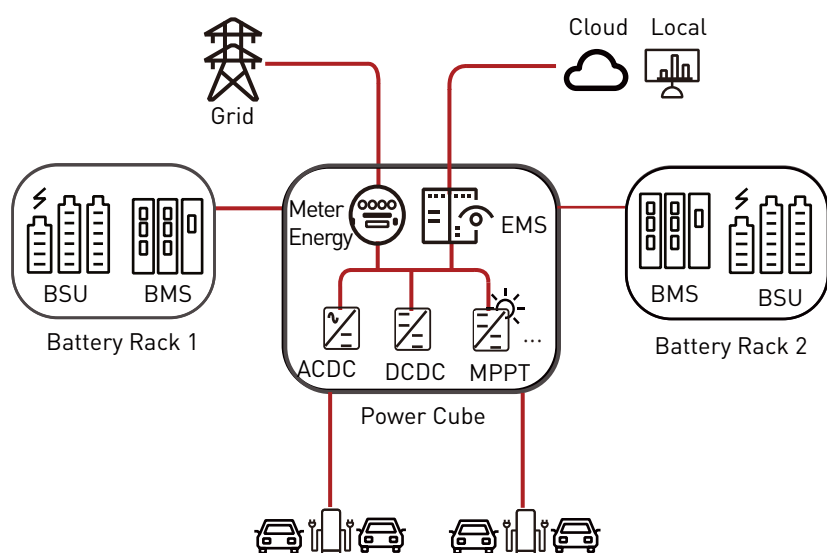
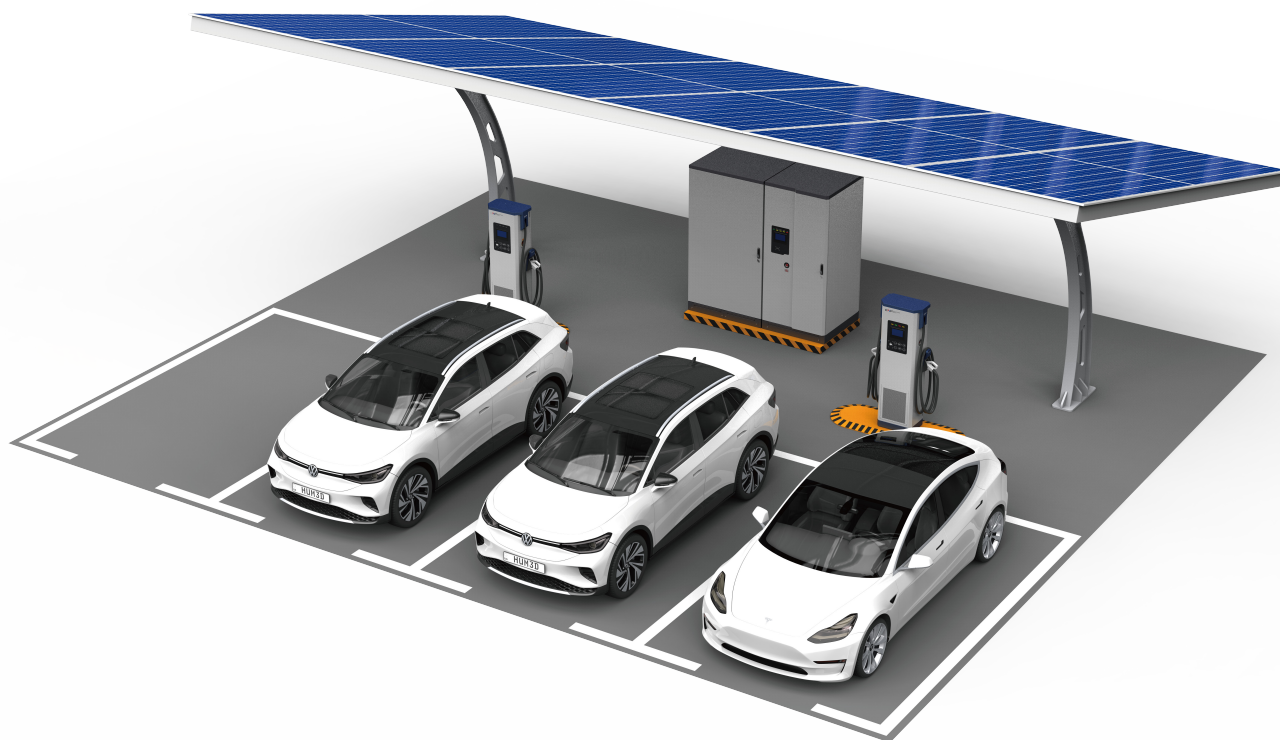


Energy Storage Charging Solution



Flexible flow of energy

Well-controlled energy flow among Grid, batteries, solar panels and other loads.



Expandability

Module-design guarantees tailored capacity and power based on individual customer requirement.



Load shifting

Store energy during off-peak power or low-fee intervals; release energy for peak hours or emergency shortage.



Digitalization

Cloud-based EMS offers remote access to manage the operation of any charging point.

IES480K1K 480kW Power Cube

	AC input voltage	45-65Hz/ 3-phases+N+PE / 260Vac-530Vac
	AC max input current	645A
	AC Distribution	AC Grid charging power to Energy Storage Battery is max 120kW, to EV is max 240kW.
AC grid access	AC feedback power (optional)	Energy Storage Battery max feedback to Grid/B2G is 88kW,
	Battery group access channel	Max 2 channels
Energy Storage	Battery charging power from AC Grid	Max 120kW
	Battery discharging channel to EV	Max 4 channels
Battery access	Battery B2V EV charging power	Max 240kW
	Battery B2G AC grid feedback power (optional)	Max 88kW
Electric Vehicle	EV Charging point	Max 4 point within 2 Dispensers
	EV Charging power	Max 480kW
Electric Vehicle discharging	EV feedback to AC Grid/V2G power (optional)	Max 176kW
	EV feedback to Energy Storage Battery/V2B power (optional)	Max 120kW
Dimention	W * H * D mm = 1000 * 2200 * 1200 mm	

EXP480K2-LDC 480kW Charging Dispenser

	Normal Charging Cable	CCS1 200A/300A 1000V, CCS2 200A/250A 1000V. ChadeMo 125A/500V, GBT 250A/1000V
	Liquid cooling cable	500A/1000V CCS1 or CCS2 or GBT
	Dimentions	W * H * D mm = 500 * 1750 * 350 mm Weight: 160 kg

IBS215K768 200kWh Battery Cube

	Energy Storage Battery	200kWh/280Ah Energy storage battery, Battery voltage: 627V-806V, Charging/ discharging ratio: 0.5 C dis/charge, max 1 C discharge 10 min
	Battery BMS	Battery Pack BSU + High voltage control box master-slave BMU
	Battery Capacity Expand	Max 4 groups battery/battery cube access, 4 BMU
	Fire suppression system	Temperature-activated fire extinguishing system + fire probe tube + Air pressure sensor and valves, emergency fan
	Protection Class	IP65
	Dimention/Weight	W * H * D mm = 1200 * 2200 * 1200 / 1600 kg

Download